



# ACBEL POLYTECH INC.

Mar 2017



# Agenda

Company Profile  
&  
Future Prospect

Financial Results



# Company Profile & Future Prospect

# Group Overview

New Kinpo Group

Established : 1973

Major Business :

Electronic Components

Manufacturing ; Communication

Services ; PC, NB, Mobile Phone

Printer Assembly

---

Revenue : 2015 US\$33.5 Billion

2016 US\$36.5 Billion (f)

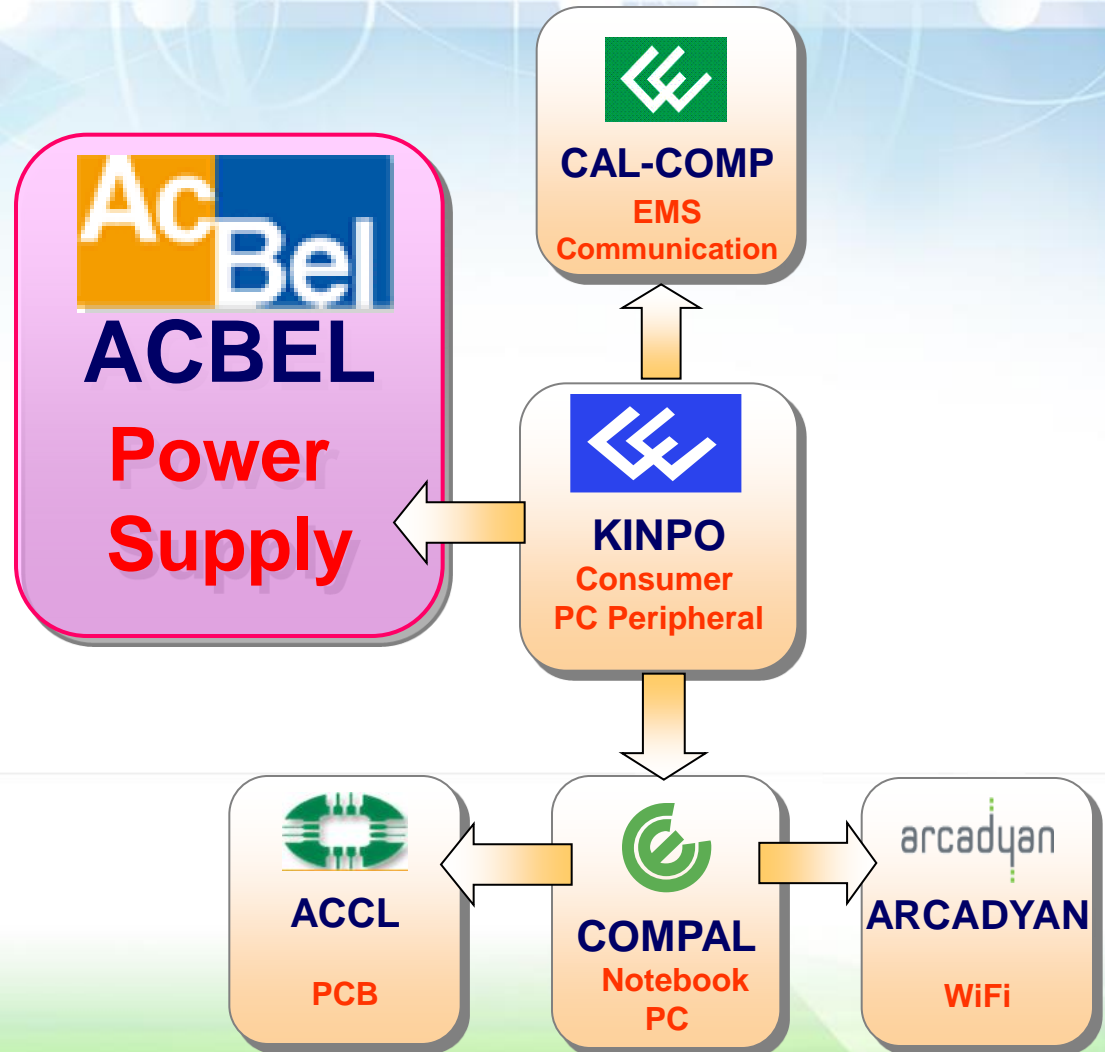
Total Employees : 114,845

AcBel Employees: 7,900

---

Production Sites : 72

Public Listed Company : AcBel,  
Kinpo, Compal, Cal-Comp,  
Arcadyan, ACCL



\*Only listed affiliates





# Shareholders



(Date:2016.9.6)

**1<sup>st</sup> Corporate Governance ranking top 5%**  
**12<sup>th</sup> Taiwan listed companies information transparency and disclosure highest ranking A++**

- The largest shareholder is Kinpo Electronics Inc., holding 22.58% shares.
- AcBel's Board of Directors consist of three Independent Directors, strength corporate governance.

# History

- 1981- AcBel were founded in July, named Leadtorn Industrial Inc.
- 1985- AcBel obtain power supply orders from IBM.
- 1996- AcBel acquire a business division from Vidar-SMS and change official name to API Technology Co., Ltd.
- 1998- AcBel announce new CIS and change English name to AcBel Polytech Inc.
- 2003- AcBel IPO on Taiwan Stock Exchange (ticker 6282).
- 2009- AcBel launch intelligence LED street light products.
- 2010- AcBel and Bloomenergy strategic alliance to launch fuel cell products.
- 2013- AcBel ship smart grids products to Taipower.
- 2015- AcBel ship smart grids products to Penghu and LED street light to Keelung.
- 2016- AcBel receive SER Award from HP (The Best Supplier) and 2016 China Environmental Social Responsibility Enterprise Award.



# Company Vision

“提供完整的解決方案，  
成為尖端環保能源的最佳夥伴”

“Providing total solution to be your  
leading edge green power partner.”



# Consumer Power Supply



## Consumer(IT)

- Personal Computer (DT, AIO, NB)
- **Smart Phone**
- **Tablet**
- **Entry-Level Server**



## Consumer(Others)

- Set-Top-Box
- Water Filter & **Air Purifier**
- Printer (Inkjet, **Laser**, 3D)
- **Unmanned Aircraft**
- **Surveillance**



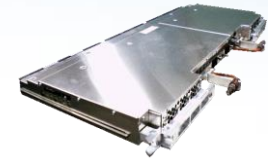


# Industrial Power Supply (1)



## Data Center Equipment

- Main Frame
- Storage
- Server



## Networking

- PSU
- Super Router



# Industrial Power Supply (2)



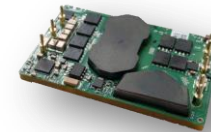
## Medical

- MRI
- Ultrasound
- Respirator
- AED



## Telecom

- DC-DC module
- Telecom Power + Cabinet
- SMR (Switching Mode Rectifier)



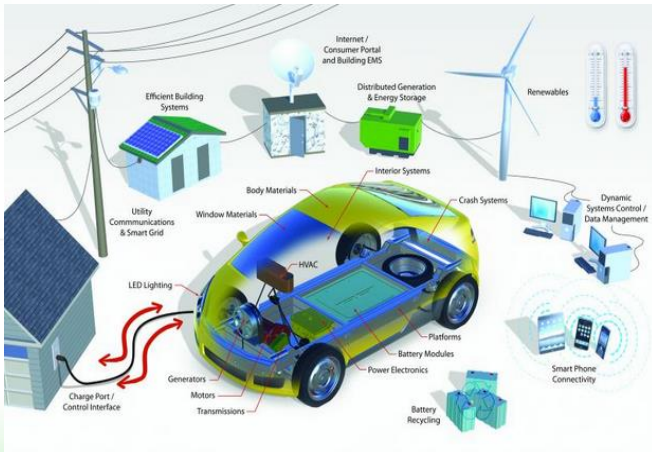
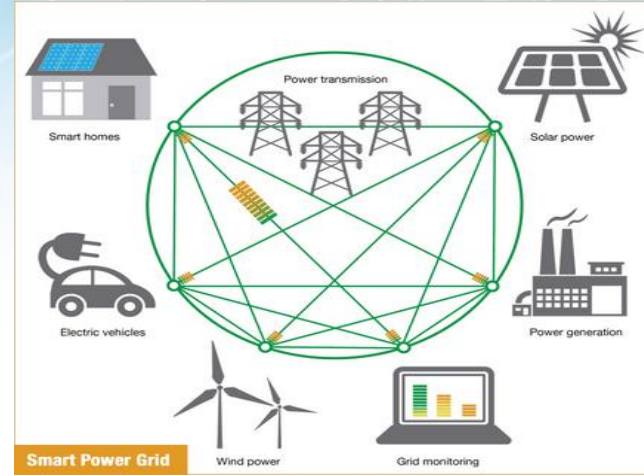


# Industrial Power Supply (3)

## Fuel Cell



## Smart Grids

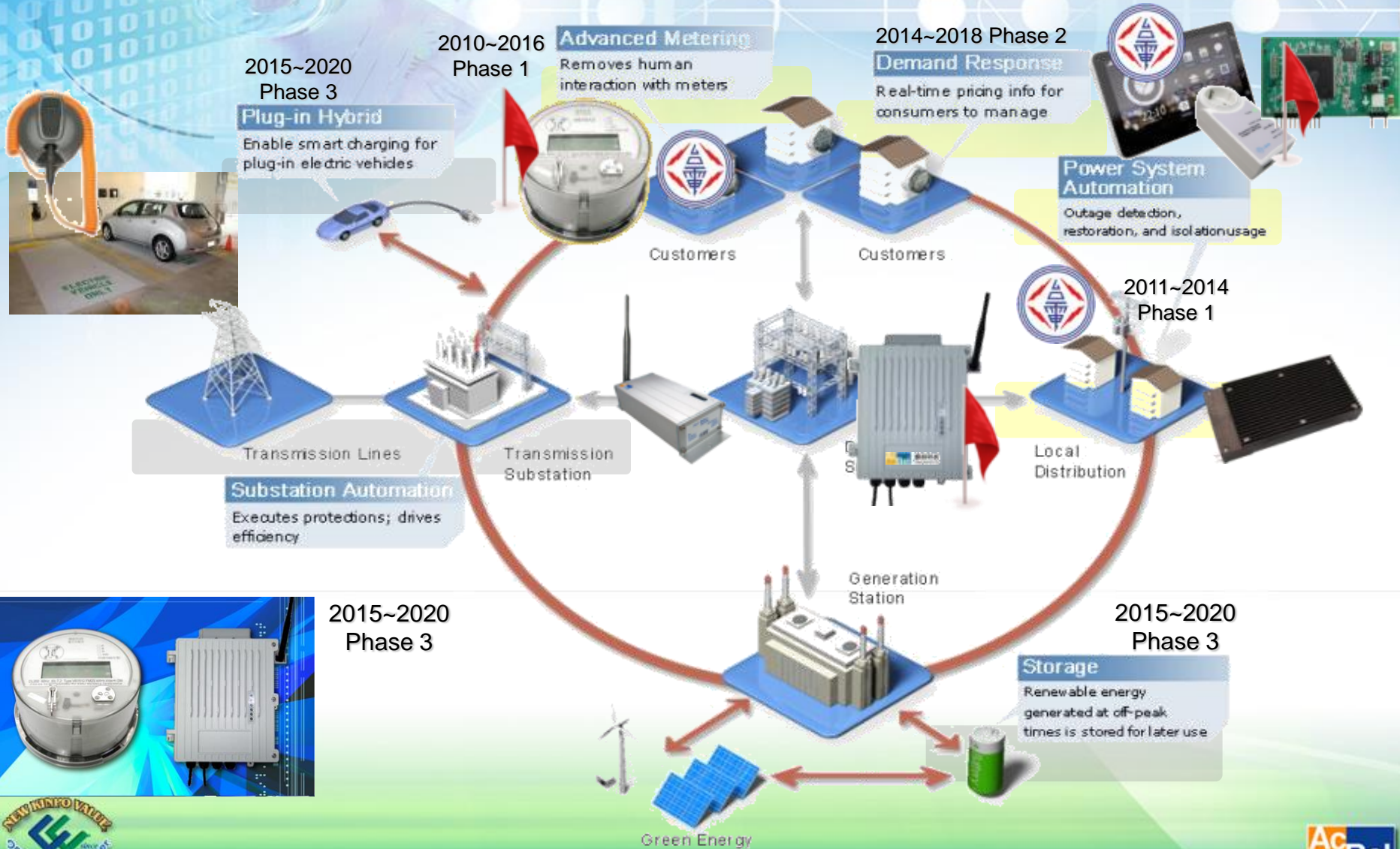


## Electric Vehicle



## LED Lighting

# Smart City Strategy



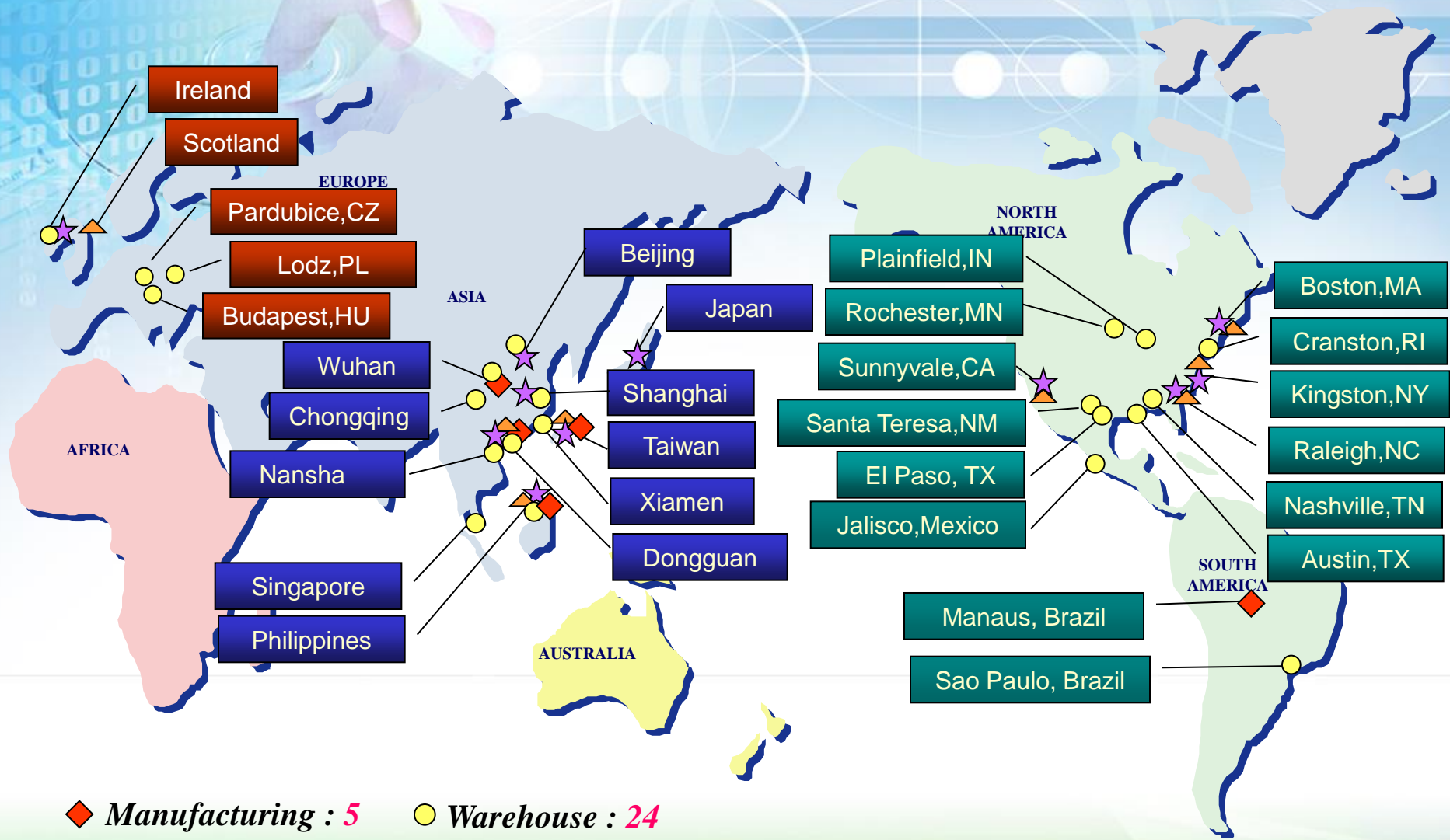


# Balanced Customers Portfolio

AMWAY  
ARRIS  
ASUS  
BLOOM ENERGY  
CALCOMP  
CANON  
CELESTICA  
CHT  
CISCO  
COMPAL  
DELL  
DELL EMC  
DIEBOLD NIXDORF  
DJI  
DOTHILL  
E.ON  
FOXCONN  
FUJITSU  
GOOGLE  
HIKVISION  
HITACHI  
HP  
IBM  
JUNIPER  
KINPO  
LENOVO  
MTI  
NCR  
NEC  
NOKIA  
PEGATRON  
PHILIPS  
QUANTA  
SCHNEIDER  
SHARP  
SUGON  
SUPERMICRO  
TAIPOWER  
TECHNICOLOR  
TOSHIBA  
WISTRON  
ZT

\*in alphabetic order

# Global Logistics



◆ Manufacturing : 5      ● Warehouse : 24  
 ▲ Technical Support & After Service : 8      ☆ Office : 11



# Plant Info (1)

Taiwan



Dongguan, China





# Plant Info (2)



Wuhan, China

Laguna, Philippines



Manaus, Brazil



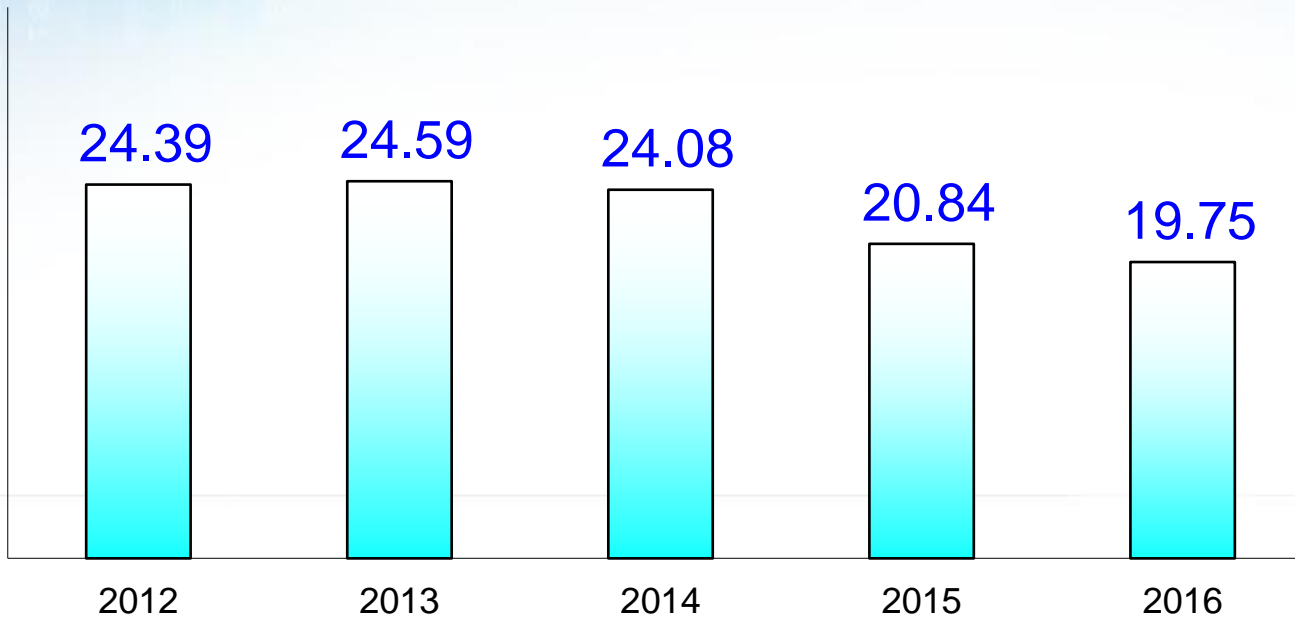


# Financial Results

- From 2013, the financial numbers are based on International Financial Reporting Standards (IFRS)

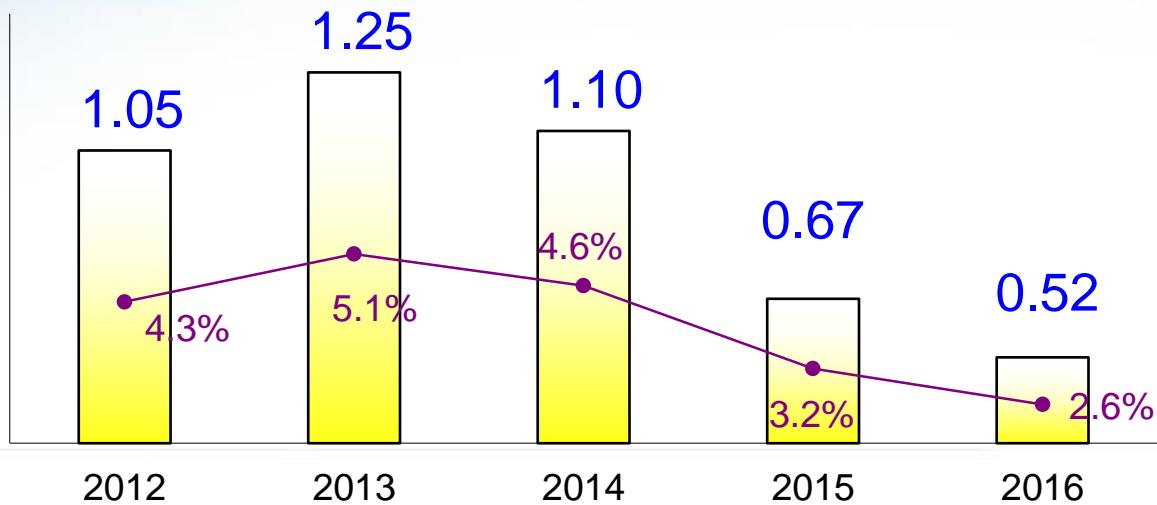
# Consolidated Revenue

Unit: NT\$ billion



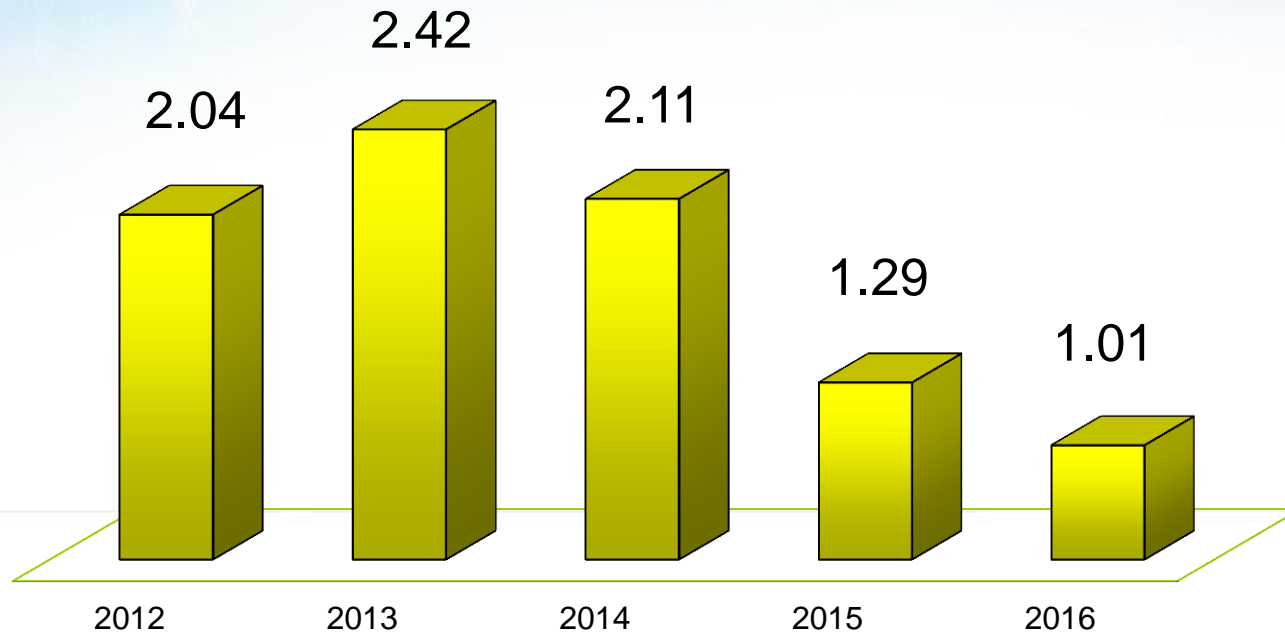
# Net Income After Tax

Unit: NT\$ billion & % of revenue



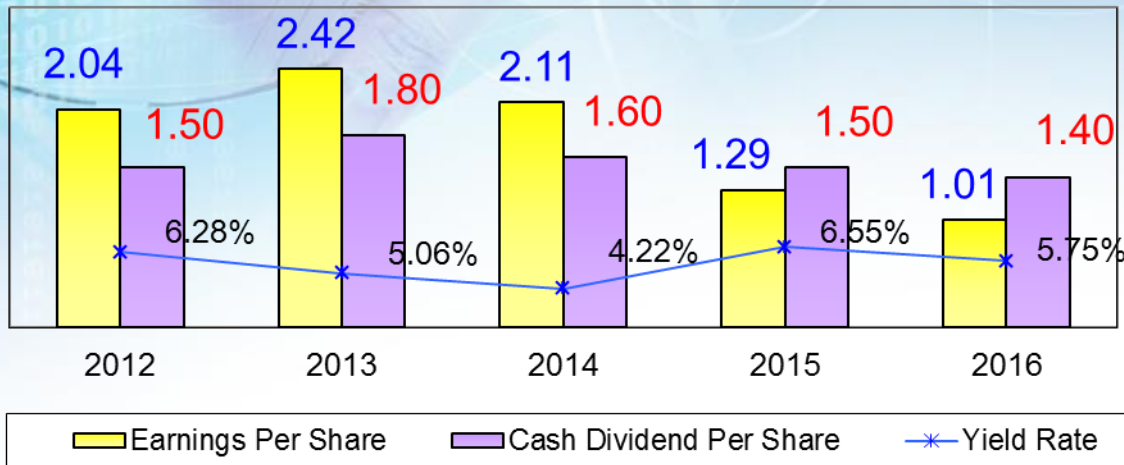
# Earnings Per Share

Unit: NT\$





# Dividend Policy



- ◆ High payout ratio.
- ◆ High cash yield.
- ◆ Debt ratio maintain 50% for long time, operating on healthy Balance Sheet.

Dividend Year	2012	2013	2014	2015	2016
Earnings Per Share	2.04	2.42	2.11	1.29	1.01
Cash Dividend Per Share	1.50	1.80	1.60	1.1+0.4*	0.9+0.5*
Dividend Payout Ratio	73.53%	74.38%	75.83%	116.28%	138.61%
Yield Rate	6.28%	5.06%	4.22%	6.55%	5.75%

\*Cash dividend distributed from capital surplus.

\*\*The price for calculating yield rate is the day before the meeting of Board of Directors in the following year.

Thank you

