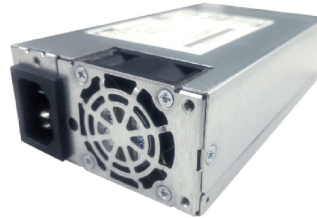


FEATURES

- 80 PLUS Gold.
- Active Power Factor Correction.
- Smart fan speed control.
- Environmental Compliance : RoHS, WEEE, REACH.
- Application : Server, Storage, Networking, IPC.
- EMI/RFI : CISPR22 and EN55022; Class A
- PROTECTION : OVP, OCP, OTP, SCP
- SAFETY : UL/cUL, TUV, FCC, CCC, BSMI, KC, BIS, CB, CE

FSD059

DIMENSION : 81.5*150*40(mm)
Total Max Power : 500W



INPUT SPEC.

| Input Voltage | Input frequency | Input Current |
|---------------|-----------------|------------------------|
| 90-264Vac | 47~63Hz | 8A@100Vac 4A@244Vac |

OUTPUT SPEC.

| Voltage | Regulation | Max Load | Ripple & Noise |
|-------------------|------------|----------|----------------|
| +3.3V | +/-5% | 15A | 50mV p-p |
| +5V | +/-5% | 18A | 50mV p-p |
| +12V1 | +/-5% | 24A | 120mV p-p |
| +12V2 | +/-5% | 24A | 120mV p-p |
| +5V _{SB} | +/-5% | 3A | 50mV p-p |

ENVIRONMENTAL SPEC.

| Temperature | Altitude | Relative humidity | Lightning surge |
|-------------|----------------------|---------------------------|--------------------------------------|
| 0°C~+50°C | 10,000ft (3,048m) | 5% to 95% RH Operating | Line to Line ±1KV Line to PE ±2KV |

GENERAL SPEC.

| Hold-up Time | Efficiency | MTBF |
|----------------|--------------------|---------------------------------------|
| 17ms@100% load | Over 87% @All Load | 100,000 hours minimum at full load |

- *NOTE :** 1) Total DC output power should not exceed 500W
2) +3.3Vdc and +5Vdc outputs shall not exceed 100W
3) +12V1 and +12V2 shall not exceed 40A

- 4) Power supply in no load condition on all outputs including 5V_{SB}, it cannot trip any failure circuitry shutdown

OUTLINE DRAWING

