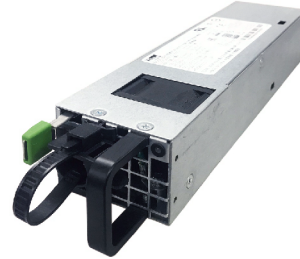


## FEATURES

- 80 PLUS Platinum.
- Support Active-Standby mode Design.
- Active Power Factor Correction.
- Smart fan speed control.
- Environmental Compliance : RoHS, WEEE, REACH.
- Application : Server, Storage, Networking, IPC.
- EMI/RFI : CISPR22;CLASS A
- PROTECTION : OVP, OCP, OTP, SCP
- SAFETY : UL/cUL, TUV, FCC, CCC, BSMI, CB, CE

## FSE012

Dimension : 54.5\*220\*40(mm)  
Total Max Power : 700W



### INPUT SPEC.

| Input Voltage           | Input frequency | Input Current         |
|-------------------------|-----------------|-----------------------|
| 90-264Vac<br>164-300Vdc | 47-63Hz         | 9A@90Vac<br>4A@240Vdc |

### OUTPUT SPEC.

| Voltage       | Regulation | Max Load     | Ripple & Noise        |
|---------------|------------|--------------|-----------------------|
| +12V<br>+5Vsb | ±5%<br>±5% | 58.33A<br>3A | 120mV p-p<br>50mV p-p |

### ENVIRONMENTAL SPEC.

| Temperature | Altitude               | Relative humidity         | Lightning surge                      |
|-------------|------------------------|---------------------------|--------------------------------------|
| 0°C~+50°C   | 16,404.2ft<br>(5,000m) | 5% to 90%<br>RH Operating | Line to Line ±1KV<br>Line to PE ±2KV |

### GENERAL SPEC.

| Hold-up Time   | Efficiency    | MTBF                                  |
|----------------|---------------|---------------------------------------|
| 12ms@full load | 91%@100% Load | 200,000 hours minimum<br>at full load |

\*NOTE: 1) The total power can not exceed 700W.

2) The values stated do not include the current required for the redundant power supply's internal consumption.

### OUTLINE DRAWING

