

# R1B Series

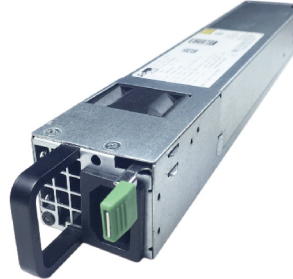
# 450W

## FEATURES

- 80 PLUS Gold
- Support Active-Standby mode design.
- Support Bidirectional Fan Design.
- Environmental Compliance : RoHS, WEEE, REACH.
- Application : Server, Storage, Networking, IPC.
- EMI/RFI : CISPR22;CLASS A
- PROTECTION : OVP 、 OCP 、 OTP 、 SCP
- SAFETY : UL/cUL, TUV, FCC, CCC, BSMI, KC, BIS, CB, CE

## R1BA2451B/C

Dimension : 50.5\*300\*40.2(mm)  
Total Max Power : 450W



### INPUT SPEC.

Input Voltage	Input frequency	Input Current
90-264Vac 180-300Vac	47-63Hz	4A@100Vac-240Vac

### OUTPUT SPEC.

Voltage	Regulation	Max Load	Ripple & Noise
+12V +5Vsb	+/-5% +/-5%	37.5A 3A	120mV p-p 50mV p-p

### ENVIRONMENTAL SPEC.

Temperature	Altitude	Relative humidity	Lightning surge
0°C~+50°C	16,404.2ft (5,000m)	5% to 95% RH Operating	Line to Line ±1KV Line to PE ±2KV

### GENERAL SPEC.

Hold-up Time	Efficiency	MTBF
13ms@full load	Over 88% @100% load	100,000 hours at 40°C ambient with 115VAC and in 75% load condition

- \*NOTE:** 1) Maximum continuous total DC output power should not exceed 450W.  
2) The warning signal will send to system during 110% of maximum load,  
and shuts down shile over 130% load of maximum load.

### OUTLINE DRAWING

